

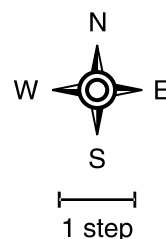
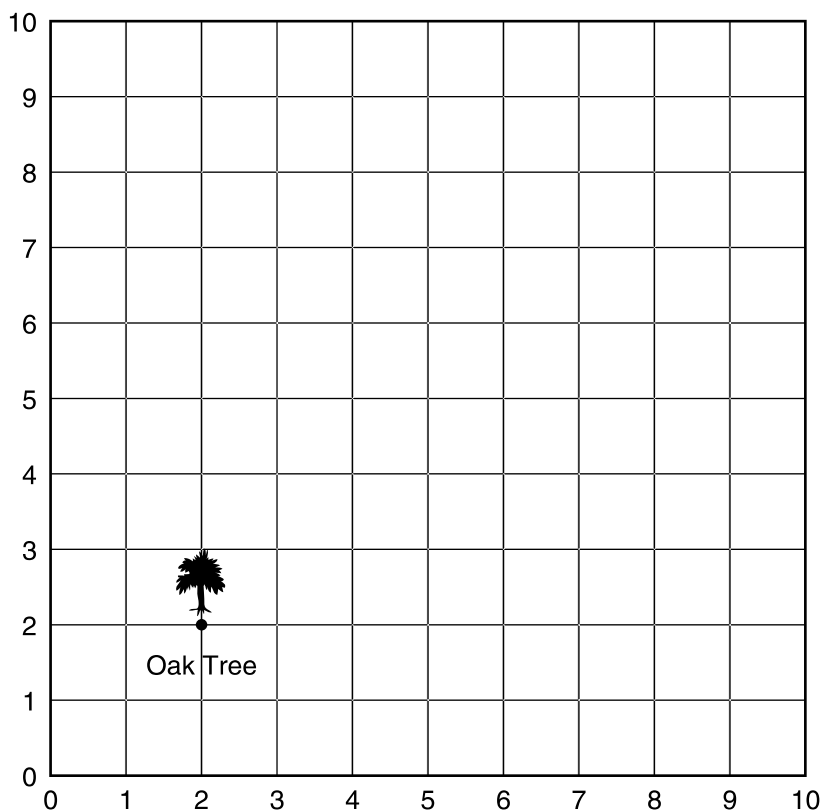
STUDY LINK
6•5

Treasure Hunt



Marge and her friends are playing Treasure Hunt. Help them find the treasure. Follow the directions. Draw the path from the oak tree to the treasure. Mark the spot where the treasure is buried.

1. Start at the dot under the oak tree; face north. Walk 4 steps.
2. Make a quarter turn, clockwise. Walk 5 steps.
3. Face south. Walk 2 steps.
4. Face east. Walk $2\frac{1}{2}$ steps.
5. Make a $\frac{3}{4}$ turn, clockwise. Walk 5 steps.
6. Make a $\frac{3}{4}$ turn, clockwise. Walk $6\frac{1}{2}$ steps.
7. Make an X to mark the spot where you end.


Practice

8. $88 \div 3 =$ _____

9. _____ $= 71 \div 6$

10. _____ $= 603 / 7$

11. $934 / 5 =$ _____