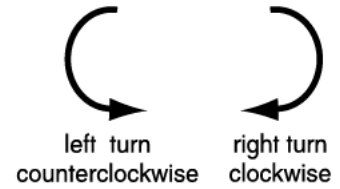




**Family Note** If your child needs help with the following problems, consider putting up signs in a room in your home to indicate the directions *north, south, east, and west*. Do the turns with your child.

*Please return this Home Link to school tomorrow.*



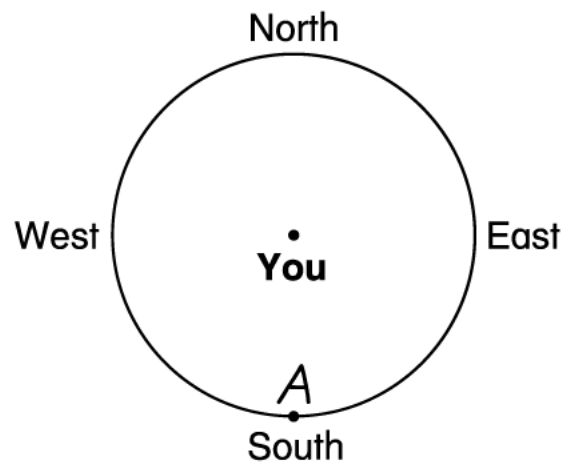
Make the turns described below. Show which way you face after each turn.

- ◆ Draw a dot on the circle.
- ◆ Label the dot with a letter.

**Example:** Face north.

Do a  $\frac{1}{2}$  turn counterclockwise.

On the circle, mark the direction you are facing with the letter *A*.



1. Face north. Do a  $\frac{1}{4}$  turn clockwise. Mark the direction you are facing with the letter *B*.
2. Face north. Do a  $\frac{3}{4}$  turn clockwise. Mark the direction you are facing with the letter *C*.
3. Face east. Do a  $\frac{1}{4}$  turn counterclockwise. Mark the direction you are facing with the letter *D*.
4. Face west. Make less than a  $\frac{1}{4}$  turn clockwise. Mark the direction you are facing with the letter *E*.
5. Face north. Make a clockwise turn that is more than a  $\frac{1}{2}$  turn, but less than a  $\frac{3}{4}$  turn. Mark the direction you are facing with the letter *F*.
6. Face north. Make a counterclockwise turn that is less than a  $\frac{1}{2}$  turn, but more than a  $\frac{1}{4}$  turn. Mark the direction you are facing with the letter *G*.